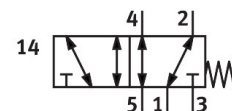



# Front panel valve SV-5-M5-B

Part number: 11914

FESTO



 General operating condition

## Data sheet

Feature	Value
Valve function	5/2-way, monostable
Type of actuation	Manual
Standard nominal flow rate (standardised to DIN 1343)	95 l/min
Operating pressure	0 MPa ... 0.8 MPa
Operating pressure	0 bar ... 8 bar
Design	Poppet valve with spring return
Type of reset	Mechanical spring
Nominal size	2.3 mm
Sealing principle	Soft
Mounting position	optional
Type of piloting	Direct
Symbol	00991339
lap	Overlap
Explosion protection	Zone 1 (ATEX) Zone 2 (ATEX) Zone 21 (ATEX) Zone 22 (ATEX)
Operating medium	Compressed air to ISO 8573-1:2010 [-:--]
LABS (PWIS) conformity	VDMA24364-B1/B2-L
Ambient temperature	-10 °C ... 60 °C
Actuating force	17 N
Product weight	53 g
Type of mounting	Front panel mounting With through-hole
Pneumatic connection, port 1	M5
Material seals	NBR
Material housing	Polymer Brass