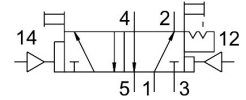



Pneumatic valve JDH-5-1/4

Part number: 10409

FESTO



 [General operating condition](#)

Data sheet

Feature	Value
Valve function	5/2-way, bistable, dominant
Type of actuation	Pneumatic
Construction width	30.5 mm
Standard nominal flow rate (standardised to DIN 1343)	1100 l/min
pneumatic working port	G1/4
Operating pressure	0 MPa ... 0.8 MPa
Operating pressure	0 bar ... 8 bar
Design	Poppet seat
Degree of protection	IP65
Nominal size	7 mm
Grid dimension	32 mm
Exhaust-air function	With flow control option
Sealing principle	Soft
Mounting position	optional
Type of piloting	Direct
Pilot air supply	External
Flow direction	Non-reversible
Symbol	00995764
lap	Underlap
Pilot pressure	0.23 MPa ... 1 MPa
Pilot pressure	2.3 bar ... 10 bar
Max. switching frequency	12 Hz
Switching time reversal	12 ms
Operating medium	Compressed air to ISO 8573-1:2010 [7:4:4]
Note on operating and pilot medium	Lubricated operation possible (in which case lubricated operation will always be required)
Corrosion resistance class CRC	1 - Low corrosion stress
LABS (PWIS) conformity	VDMA24364-B1/B2-L
Storage temperature	-20 °C ... 60 °C
Media temperature	-10 °C ... 60 °C
Ambient temperature	-10 °C ... 60 °C
Product weight	330 g
Type of mounting	Either: On manifold rail With through-hole
Pilot air port 12	G1/8

Feature	Value
Pilot air port 14	G1/8
Pneumatic connection, port 1	G1/4
Pneumatic connection, port 2	G1/4
Pneumatic connection, port 3	G1/4
Pneumatic connection, port 4	G1/4
Pneumatic connection, port 5	G1/4
Note on materials	RoHS-compliant
Material seals	NBR TPE-U(PU)
Material housing	Die-cast aluminium